

Date \_\_\_\_\_

Reference # \_\_\_\_\_

Quote# \_\_\_\_\_

**Instructions:** Complete both sides of this form to describe the line requiring non-IBC control. This information will be used to match the Non-IBC system to the line and application. Use one form per extrusion line. If you have any special considerations, please note them on the drawing below or under special instructions.

Company Name: \_\_\_\_\_ Contact: \_\_\_\_\_

Billing Address: \_\_\_\_\_ City, State, Zip: \_\_\_\_\_

Email: \_\_\_\_\_ Phone: \_\_\_\_\_ Fax: \_\_\_\_\_

Shipping address is  same as billing  different than billing (see reverse side for shipping address).

## INSTALLATION CONFIGURATION

1. Line Number: \_\_\_\_\_

2. Typical plant compressed air pressure: \_\_\_\_\_ psi

3. Layflat Range (Min): \_\_\_\_\_ (Max): \_\_\_\_\_

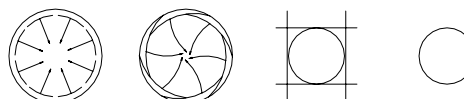
4. What  Oscillates?  Rotates\*? (Check all that apply)

\*Rotate refers to dies that never change direction.

- Nothing       Die  
 Primary Nips       Sizing Cage  
 Extruder Platform

\*Note: Rotating dies require a customer convert the die to an oscillating die. Oscillating dies require a customer provided method to coil and uncoil the air line.

5. Cage Type: (Note: 3 or 4 sensors are required for STAB or NONE)



RADIAL      IRIS      STAB      NONE  
                 

6. Die Diameter \_\_\_\_\_  inches  
 mm

7. Air In Diffuser Threads on Top of Die

- 1/8" NPT       1/2" NPT       Other  
 1/4" NPT       3/4" NPT  
 3/8" NPT       1" NPT      (Specify)

## SYSTEM CONFIGURATION

A. Touch Screen

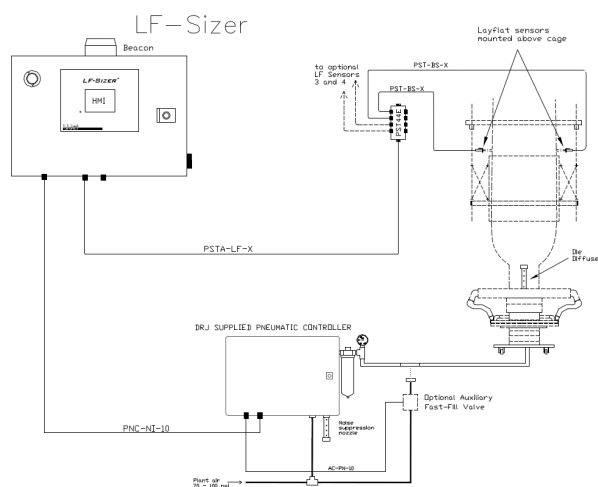
- Standard 4" Color TFT

B. Layflat Sensors (Standard system comes with two sensors. If you have a STAB cage or NO Cage, 3 or 4 sensors are required.)

- \_\_\_\_\_ (choose from 2, 3 or 4 standard range sensors)  
 \_\_\_\_\_ (choose from 2, 3 or 4 long range sensors)  
 If layflat range is more than 3800mm (150 inches) choose long range sensors.




C. Pneumatic Box

- Standard - fast inflate, slow inflate, slow deflate  
 Kundig Tubair- slow inflate, slow deflate  
 User Supplied



D. HMI to Sensor Junction Box: \_\_\_\_\_  
 (choose from 5, 10 or 15 meters)

D. Power Cable

- Power Cord Modular 7 ft. USA Version 
- Power Cord Modular 2.5m Europe Version 
- Power Cord Modular 2.5m England Version 
- Power Cord no end plug 9 ft.

E. Modem

- Integrated Remote Diagnostic Modem

F. Optional

- Additional Standard Range Sensor; Qty: \_\_\_\_\_
- Additional Long Range Sensor; Qty: \_\_\_\_\_
- Kundig FE7 Interface
- Protocol adaptor; specify protocol: \_\_\_\_\_

G. Optional second inflation valve to reduce inflation time on large bubbles

**Compressed Air**

**Line Threads**

- 3/8 NPT    None
- 1/2 NPT
- 3/4 NPT
- 1.0 NPT
- 1-1/4 NPT
- 1-1/2 NPT

**Electrical Termination**

- Conduit with 18" leads
- Din Connector Plug

**Cable Length**

- 10 meter (32.8 feet)
- 15 meter (49.2 feet)

H. Additional items to quote:

- Sizing Cage
- Secondary Cage

**Special Instructions** (note any special materials or product thickness that may be processed):

---

---

---

---

---

**Ship to address (if different from billing address on front):**

Ship to Company Name: \_\_\_\_\_ Contact: \_\_\_\_\_

Shipping Address: \_\_\_\_\_ City, State, Zip: \_\_\_\_\_

Email: \_\_\_\_\_ Phone: \_\_\_\_\_ Fax: \_\_\_\_\_